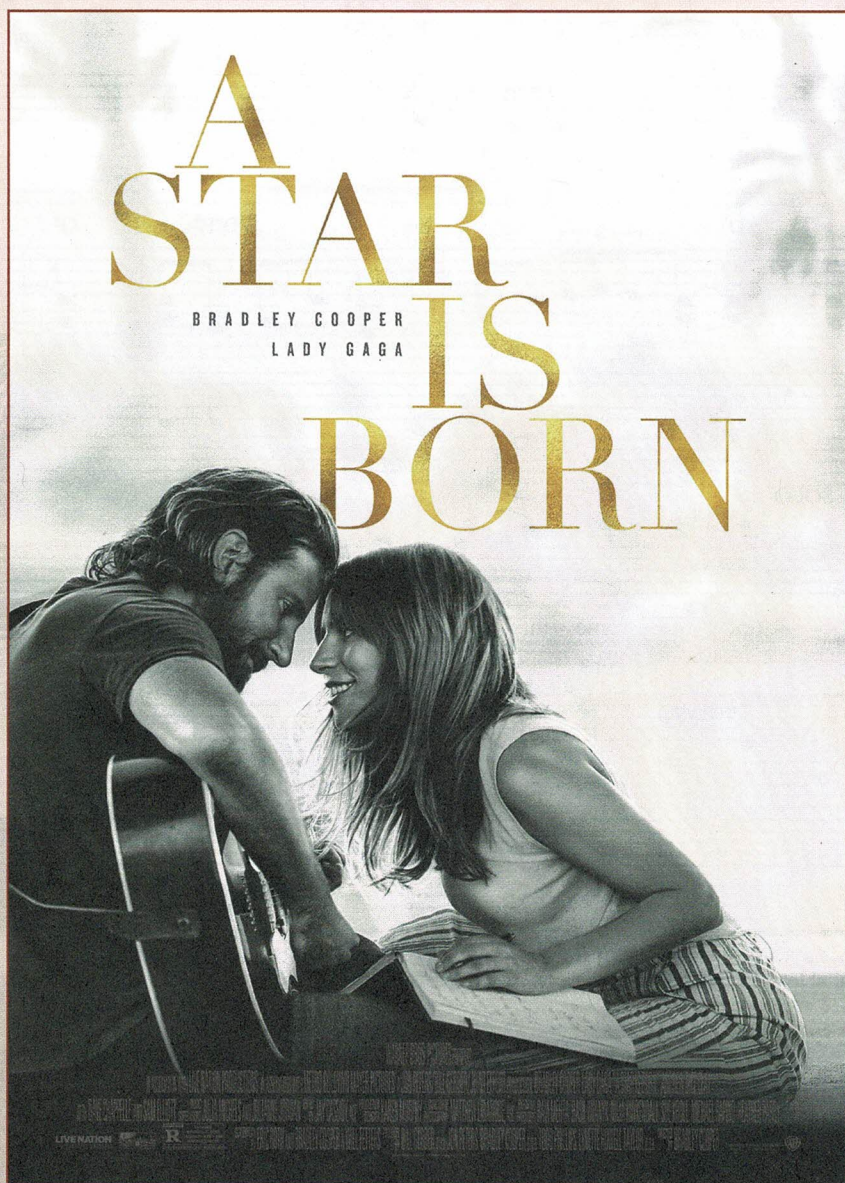


SHALLOW


WORDS AND MUSIC BY LADY GAGA, MARK RONSON,
ANTHONY ROSSOMANDO, AND ANDREW WYATT

ARRANGED BY ALAN BILLINGSLEY



SATB 47869	3-Part Mixed 47870	2-Part 47871
---------------	-----------------------	-----------------

 *Sound Trax* —47872

 *Sound Pex* —47873



from *A Star Is Born*
SHALLOW

for S.A.T.B. voices
 with optional SoundPax and SoundTrax CD*

Performance time: approx. 3:30

Arranged by
ALAN BILLINGSLEY

Words and Music by
**LADY GAGA, MARK RONSON,
 ANTHONY ROSSOMANDO,
 and ANDREW WYATT**

Easy folk rock (♩ = ca. 96)

PIANO

7 *opt. SOLO mf*

TENOR

BASS

Tell me some - thin', — girl, —

* Also available for 3-part mixed (47870) and 2-part (47871). SoundTrax CD available (47872).
 SoundPax available (47873) - includes score and set of parts for Cello (opt. synthesizer), Guitar, Bass, and Drumset.

© 2019 WARNER-BARHAM MUSIC LLC (BMI), WARNER-OLIVE MUSIC LLC (ASCAP), SONY/ATV SONGS (BMI),
 HOUSE OF GAGA PUBLISHING LLC (BMI), IMAGEM MUSIC BV (BUMA), SONGS OF ZELIG (BMI),
 DOWNTOWN DMP SONGS (BMI), DOWNTOWN DLJ SONGS (ASCAP) and CONCORD MUSIC PUBLISHING LLC (BMI)
 All Rights on behalf of WARNER-BARHAM MUSIC LLC (BMI) Administered by SONGS OF UNIVERSAL, INC. (BMI)
 All Rights on behalf of WARNER-OLIVE MUSIC, LLC (ASCAP) Administered by UNIVERSAL MUSIC GROUP (ASCAP)
 All Rights on behalf of SONY/ATV SONGS (BMI) and HOUSE OF GAGA PUBLISHING LLC (BMI)
 Administered by SONY/ATV MUSIC PUBLISHING LLC 424 Church Street, Suite 1200, Nashville, TN 37219
 All Rights on behalf of IMAGEM MUSIC BV (BUMA) and SONGS OF ZELIG (BMI) Administered by SONGS OF IMAGEM MUSIC (BMI)
 All Rights on behalf of DOWNTOWN DMP SONGS (BMI) and DOWNTOWN DLJ SONGS (ASCAP)
 Administered by DOWNTOWN MUSIC PUBLISHING LLC (PRS)
 Exclusive Print Rights on behalf of WARNER-BARHAM MUSIC, LLC (BMI) and WARNER-OLIVE MUSIC, LLC (ASCAP)
 Administered by ALFRED MUSIC
 This Arrangement © 2019 WARNER-BARHAM MUSIC LLC (BMI), WARNER-OLIVE MUSIC LLC (ASCAP), SONY/ATV SONGS (BMI),
 HOUSE OF GAGA PUBLISHING LLC (BMI), IMAGEM MUSIC BV (BUMA), SONGS OF ZELIG (BMI),
 DOWNTOWN DMP SONGS (BMI), DOWNTOWN DLJ SONGS (ASCAP) and CONCORD MUSIC PUBLISHING LLC (BMI)
 All Rights Reserved. Printed in USA.

Sole Selling Agent for This Arrangement: Alfred Music

To purchase a full-length performance recording of this piece, go to alfred.com/downloads

9

are you hap - py in this mod - ern world,

Chords: C, G, D⁵

Measure 10 features a triplet in the right hand.

11

or do you need more?

Chords: Em, D/F#, G⁵

13

Is there some- thin' else you're search - in' for?

(end solo)

Chords: C, G, D⁵

Measure 14 features a triplet in the right hand.

15 TENOR & BASS

mf

I'm fall - in'.

Chords: Em, D/F#, G⁵

17

In all the good times I find my - self a long - in'

Chords: C, G, D⁵

Detailed description: This system contains measures 17 and 18. The vocal line (bass clef) starts with a quarter rest, followed by a quarter note G, an eighth note A, a quarter note B, a quarter note C, a quarter note D, a quarter note E, a quarter note F, and a quarter note G. The piano accompaniment (treble and bass clefs) features a steady eighth-note bass line in the left hand and chords in the right hand. Chords are labeled as C, G, and D⁵.

19

for change. And in the bad times I

Chords: Em, D/F#, G⁵, C

Detailed description: This system contains measures 19 and 20. The vocal line (bass clef) has a quarter rest, a quarter note G, a quarter note A, a quarter note B, a quarter note C, a quarter note D, a quarter note E, and a quarter note F. The piano accompaniment (treble and bass clefs) continues with the eighth-note bass line and chords. Chords are labeled as Em, D/F#, G⁵, and C.

22

fear my - self.

Chords: G, D⁵, Em, D/F#, G⁵

Detailed description: This system contains measures 22 and 23. The vocal line (bass clef) has a quarter rest, a quarter note G, a quarter note A, a quarter note B, a quarter note C, a quarter note D, a quarter note E, and a quarter note F. The piano accompaniment (treble and bass clefs) continues with the eighth-note bass line and chords. Chords are labeled as G, D⁵, Em, D/F#, and G⁵.

24

Chords: Em, D/F#, G⁵

Detailed description: This system contains measures 24 and 25. The vocal line (bass clef) has a quarter rest, a quarter note G, a quarter note A, a quarter note B, a quarter note C, a quarter note D, a quarter note E, and a quarter note F. The piano accompaniment (treble and bass clefs) continues with the eighth-note bass line and chords. Chords are labeled as Em, D/F#, and G⁵.

27 **SOPRANO** *opt. SOLO*
mf

ALTO

Tell me some - thin', boy, _____

Em D/F# G⁵

29

aren't you tir - ed try'n to fill that _____ void, _____

C G D⁵

3

31

or do you need more? _____

Em D/F# G⁵

33 *(end solo)*

Ain't it hard keep - in' it so hard - core? _____

C G D⁵

35

S. *mf*

A. I'm fall - in'. In all the good times I

T. *mf*

B.

Em D/F# G C

38

find my - self long - in' for change.

G⁵ D⁵ Em D/F# G

41

And in the bad times I fear my - self.

C G⁵ D⁵

43

f

I'm off the deep — end, watch as I dive — in.

f

Am D/F#

45

I'll nev - er meet — the ground.

G D Em

47

Crash through the sur - face where they can't hurt — us. We're

Am D/F#

49

far from the shal - low now.

G D Em

51

mf
In the sha - ha, shal - low.

mf
Am7 Am7/G D/F#

53

In the sha - ha, sha - la - la - la - low.

G D Em

55

In the sha - ha, _____ shal - low. _____ We're

Am7 Am7/G D/F#

This system contains two systems of music. The first system is a vocal line with a treble clef and a key signature of one sharp (F#). The melody consists of quarter and eighth notes with a long note value. The lyrics are "In the sha - ha, _____ shal - low. _____ We're". The second system is a piano accompaniment with a grand staff (treble and bass clefs). The right hand plays chords in the treble clef, and the left hand plays a simple bass line. Chord markings above the right hand are Am7, Am7/G, and D/F#.

57

far from the shal - low _____ now. _____

G D Em

This system contains two systems of music. The first system is a vocal line with a treble clef and a key signature of one sharp (F#). The melody consists of quarter and eighth notes with a long note value. The lyrics are "far from the shal - low _____ now. _____". The second system is a piano accompaniment with a grand staff (treble and bass clefs). The right hand plays chords in the treble clef, and the left hand plays a simple bass line. Chord markings above the right hand are G, D, and Em.

60

with building intensity

Oh ah. _____ Ah _____ ha _____

Bm D A

with building intensity

This system contains two systems of music. The first system is a vocal line with a treble clef and a key signature of one sharp (F#). The melody consists of quarter and eighth notes with a long note value. The lyrics are "Oh ah. _____ Ah _____ ha _____". The second system is a piano accompaniment with a grand staff (treble and bass clefs). The right hand plays chords in the treble clef, and the left hand plays a simple bass line. Chord markings above the right hand are Bm, D, and A. The instruction "with building intensity" is written below the piano part.

63

oh ah ha.

cresc.

cresc.

Em Bm D

66

67

I'm off the deep end,

f

f

A Am

f

68

watch as I dive in. I'll nev - er meet the ground.

D/F# G D

70

Crash through the sur - face

Em Am

mf *f*

72

where they can't hurt us. We're far from the shal - low now.

D/F# G D

74 75 *driving to the end*

In the sha-ha, shal - low.

Em Am⁷ Am⁷/G D/F# D

driving to the end

77

In the sha - ha, sha - la - la - la - low. —

G D/F# Em

79

In the sha - ha, — shal - low. — We're

Am7 Am7/G D/F# D

81

far from the shal - low — now. —

G D/F# Em

MOTION PICTURE ARTWORK © 2018 WARNER BROS. ENTERTAINMENT INC. MOTION PICTURE PHOTOGRAPHY © 2018 WARNER BROS. ENTERTAINMENT INC. ALL RIGHTS RESERVED.

47869

US \$2.10

